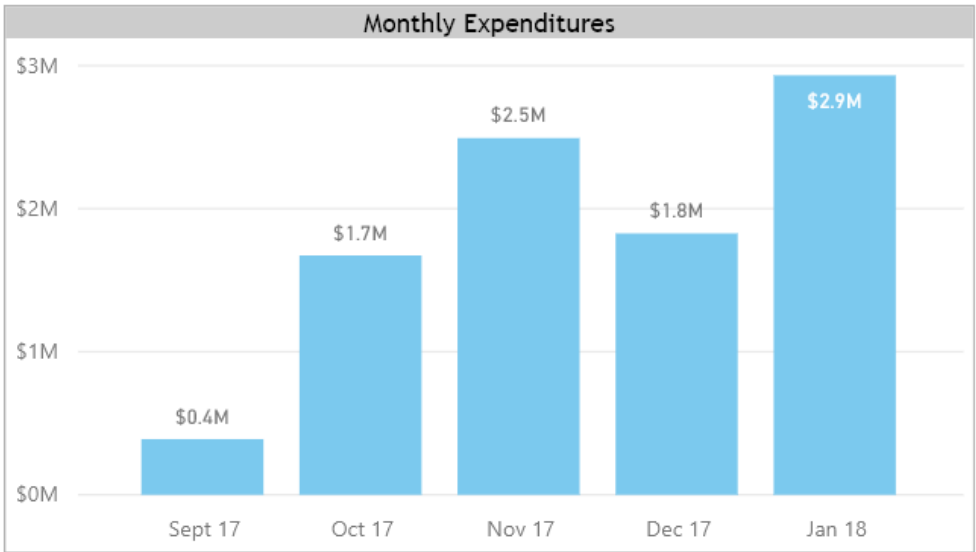
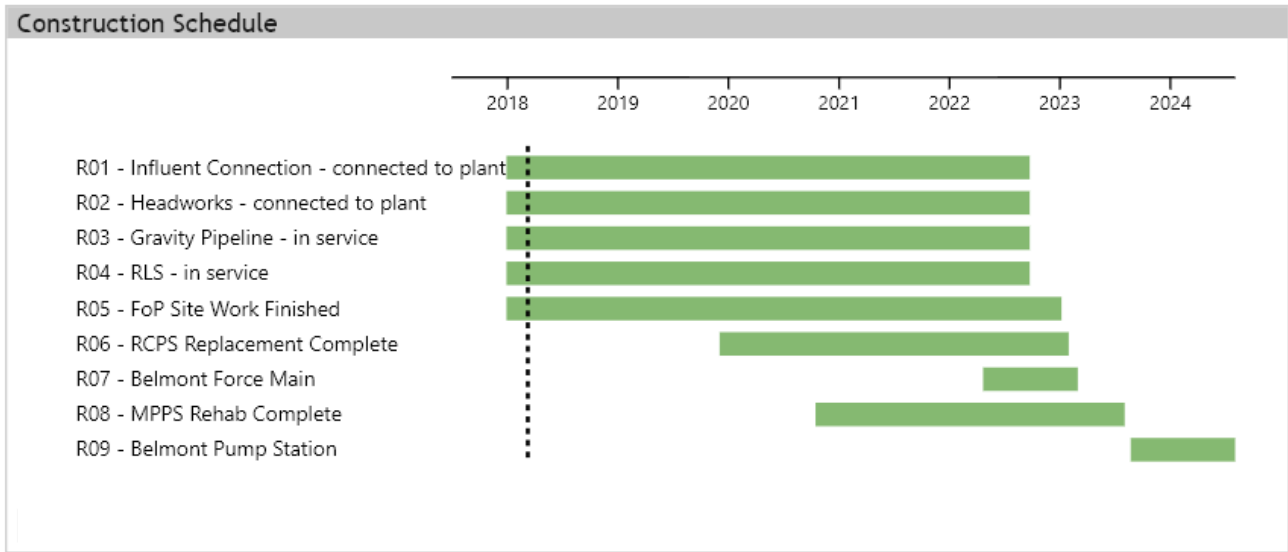
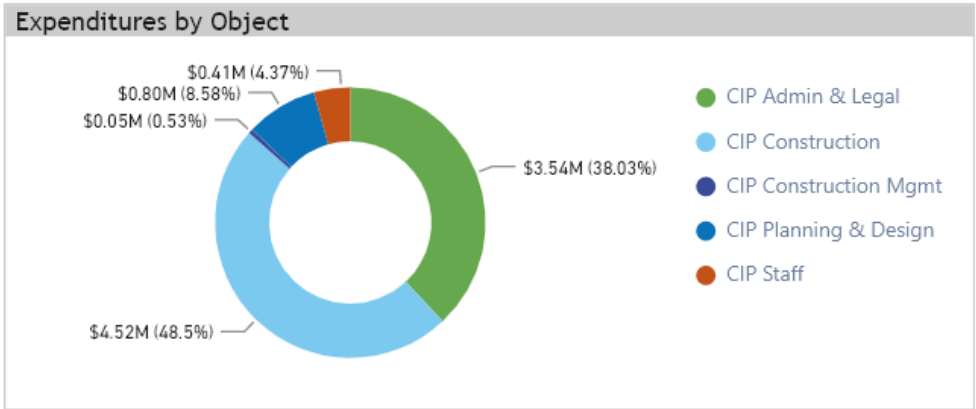
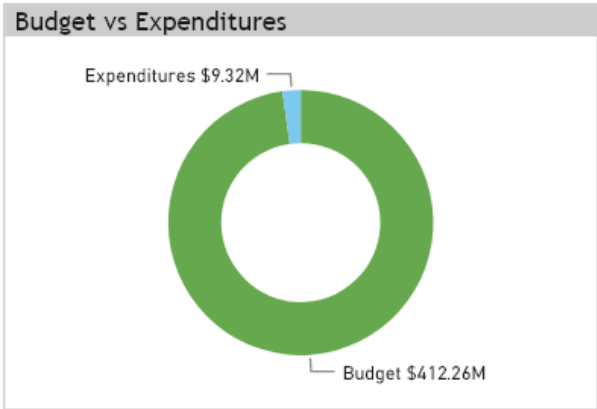
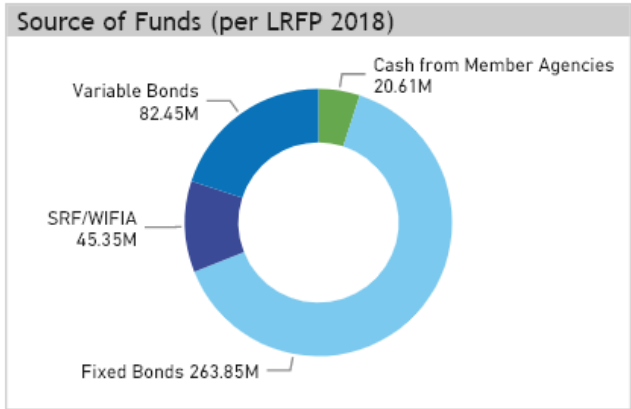


Overview



RESCU Program describes eleven projects which constitute full replacement and rehabilitation of SVCW's conveyance system. RESCU includes the Gravity Pipeline, Front of Plant, Pump Stations, and Belmont Force Main projects. The Front of Plant includes six of the eleven projects. The Conveyance System Improvements Environmental Impact Report completed and adopted by the SVCW Commission in April 2017 covers work to be done under all the RESCU Program projects.



Front of Plant Progressive DB Project



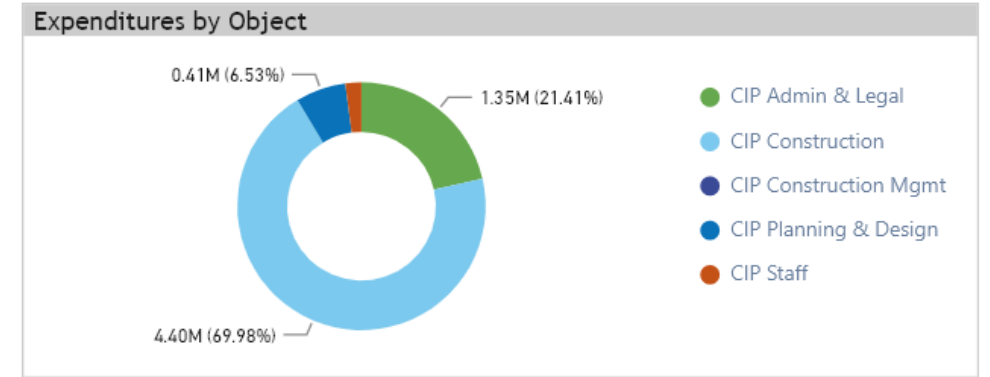
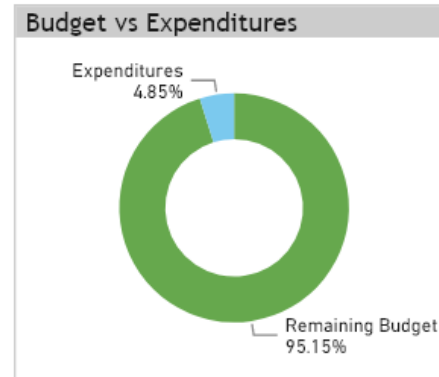
The Front of Plant (FoP) Project consists of the design, construction, permitting, start-up, commissioning, and closeout for Receiving Lift Station (RLS), Headworks Facility, Odor Control Facilities, Influent Connector Pipe, Chemical Offload Facilities, Civil site work, Emergency Overflow pipe to storage basin and related process support systems. Work is being implemented under a Progressive Design-Build procurement process in stages.

Available Budget
\$123.55M

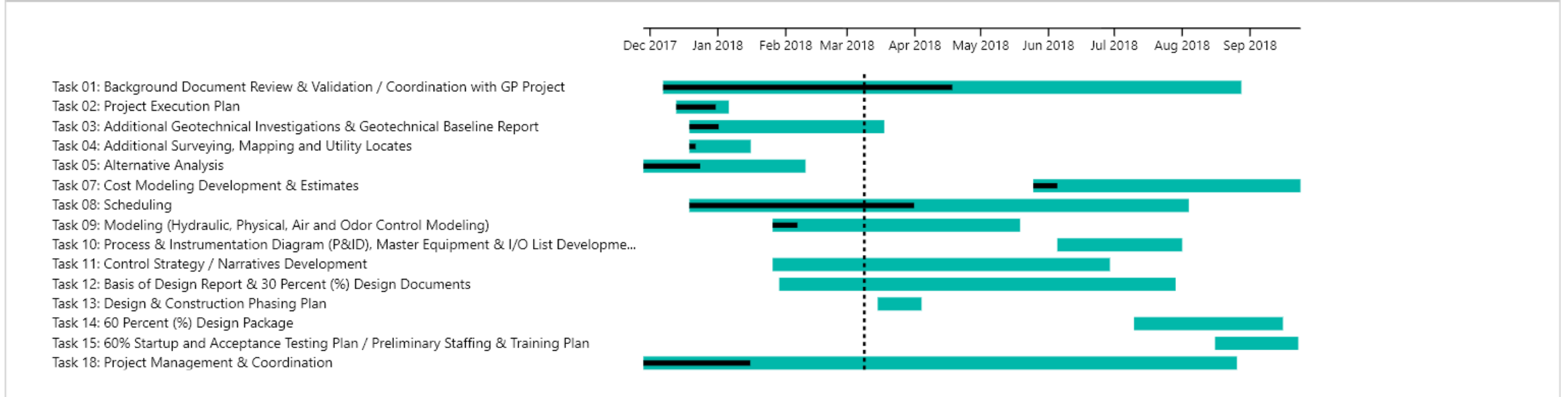
Total Expenditure
\$6.24M

Remaining Budget
\$117.26M

Milestone Schedule	Start	Finish
Notice to Proceed - Stage 1 Services	2018-11-28	
30 Percent (%) Design Documents		2018-08-22
60 Percent (%) Design Documents		2018-10-19
Basis of Design Report (BODR)		2018-06-11
Stage 1 Services Complete		2018-12-31
Stage 2 Amendment Negotiations Complete		2018-12-28



Schedule



Front of Plant Progressive DB Project



Major Accomplishments this Period	
Design	<ul style="list-style-type: none"> - Approved Project Execution Plan, Quality Management, Survey Mapping & Utility Plan, Permitting Plan, and Baseline Schedule for Stage 1 - Completed Geotechnical Borings - Selected the type of RLS and the alignment of the Interconnect Pipe - Continuing to coordinate with GP to finalize the scope delineation between the RLS Shaft and the TBM Retrieval Shaft - Completed topographical surveys
Procurement of Trade Packages	<ul style="list-style-type: none"> - Met with SOE Subcontractors, in coordination with GP DB team - Discussions with concrete pile Subcontractors
Construction	- None

Upcoming Key Activities
Flow Science Analysis
Headworks and Odor Control Alternatives Analysis
Interior Design of the RLS

3 - Month Look Ahead				
	Baseline	Forecast	February 2018	April 2018
Resubmit Permitting Plan	2018-02-15	February 15, 2018	▼	
Finalize Geotechnical Baseline Report	2018-04-26	April 26, 2018		▼
Finalize Hydraulic CFD Results	2018-04-12	April 12, 2018		▼
Design & Construction Phasing Plan	2018-04-18	April 18, 2018		▼

Safety Spot Light	
Category	Value
Lost Time	0
Near Misses	0
Recorded Losses	0

Gravity Pipeline Progressive DB Project



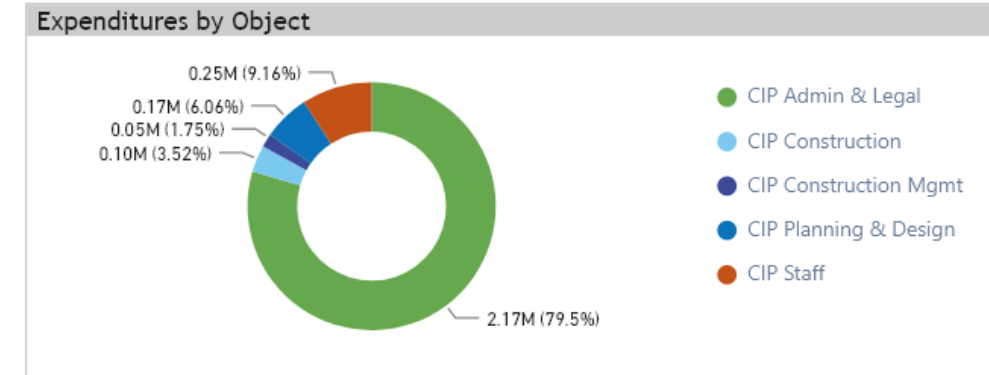
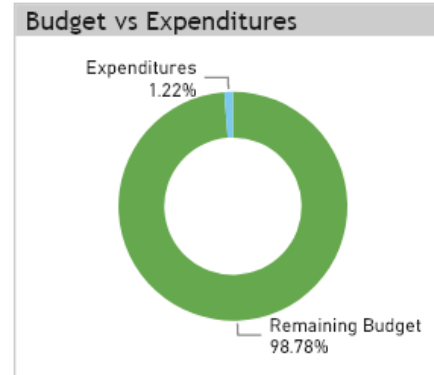
The Gravity Pipeline (GP) Project consists of the design, construction, permitting, start-up, commissioning, and closeout of approximately 17,600 feet of wastewater gravity FRP pipe inside a concrete-segment tunnel. The work includes four shafts and will interface directly with the Front of Plant (FoP) Project at the Receiving Lift Station (RLS). Work is being implemented under a Progressive Design-Build procurement process.

Available Budget
\$221.88M

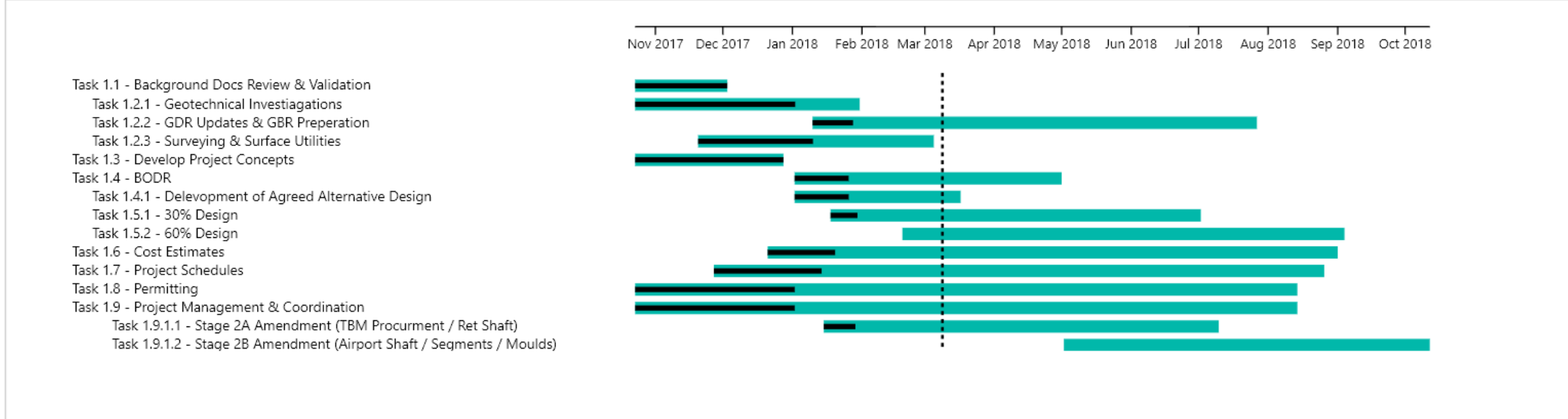
Total Expenditure
\$2.64M

Remaining Budget
\$219.15M

Milestone Schedule		
	Start	Finish
Notice to Proceed - Stage 1 Services	2017-10-13	
30 Percent (%) Design Documents		2018-09-11
60 Percent (%) Design Documents		2018-11-28
Basis of Design Report (BODR)		2018-06-19
Stage 1 Services Complete		2018-12-31
Stage 2 Amendment Negotiations Complete		2018-12-21



Schedule



Gravity Pipeline Progressive DB Project



Major Accomplishments this Period	
Design	<ul style="list-style-type: none"> - Approved Project Execution Plan, Quality Management, Survey Mapping & Utility Plan, Permitting Plan, and Baseline Schedule for Stage 1 - Completed Preliminary Geotechnical Investigation - Developed Base Design Criteria - Progressed Retrieval Shaft design to near 60% - Continuing to coordinate with FoP to finalize the scope delineation between the RLS Shaft and the TBM Retrieval Shaft
Procurement of Trade Packages	<ul style="list-style-type: none"> - Met with SOE Subcontractors, in coordination with FoP DB team - Ongoing discussions with FRP pipe manufacturers - Ongoing outreach to TBM manufacturers - Outreach in conformance with SRF and WIFIA funding requirements
Construction	- None

Upcoming Key Activities
<ul style="list-style-type: none"> Basis of Design Report for Tunnel and Retrieval Shaft Geotechnical Data Report Stage 1 Baseline Schedule

3 - Month Look Ahead			
	Baseline	Forecast	April 2018
Surveying	2018-04-20	April 20, 2018	▼
Geotechnical Interpretation Report	2018-04-16	April 16, 2018	▼
Shaft Design Package (BODR)	2018-04-17	April 17, 2018	▼

Safety Spot Light	
Category	Value
Lost Time	0
Near Misses	0
Recorded Losses	0